

# ANALOGUE IN-LINE TORQUE TRANSDUCER

## DESCRIPTION

The AWS LTD Analogue In-Line Torque Transducer range (AITT), is designed to accurately measure torque values, in a variety of industries.

With optimised torque ranges, the transducer uses a standard analogue connection through a male MIL C connector, from a full active Wheatstone bridge, outputting a mV reading.

There is an option (using the In-line Transducer Mounting Bracket, purchased separately) to bench mount the transducer in either a vertical or horizontal position.

## SPECIFICATIONS

Model: AITT-	2011	2012	2013	2014	2015	2016	2070	2017
Ranges:	0.1- 2.5Nm	0.4- 10Nm	2- 50Nm	10- 250Nm	20- 500Nm	40- 1000Nm	60- 1500Nm	0.1- 3kNm
Square Drive Size:	¼"	¼"	⅜"	½"	¾"	¾"	1"	1 ½"

Accuracy: Better than 0.1% of reading from 10 to 100% of rated output. See calibration certificate for full results.

Signal output: 2 mV/V  
Strain gauge

Communication: mV analogue output

Bridge Impedance: 350 Ω

MAX Voltage and  
Current Requirement: 10V DC 30mA

Power and  
Display: Requires a stable DC power supply and mV  
reading meter.

Overload  
capability: 125%

Maximum  
mechanical  
overload: 160% of range stated.

Operating  
Temperature: -10°C to +50°C.

Connector: Mil C 26482 series.  
6 pin. Shell size 10.

CE: 2014/30/EU

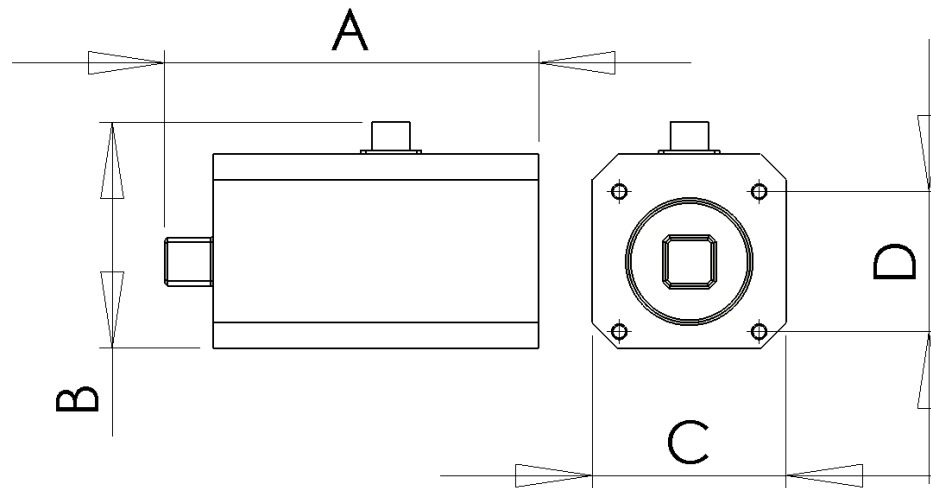
EMC: BS EN 61326:2007



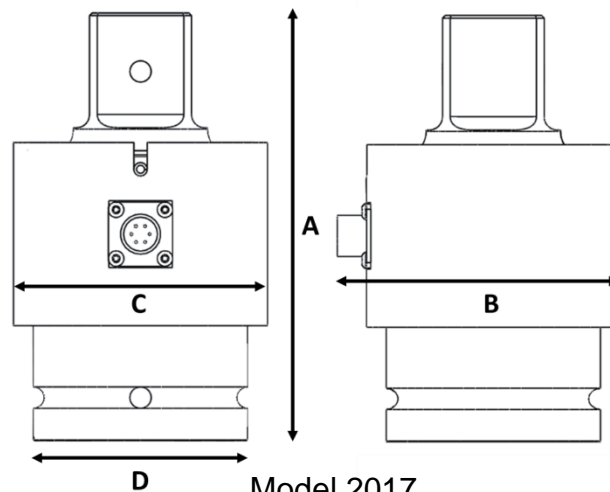
## DIMENSIONS

Model	Dimension (mm)				Face Mounting Tapped Hole*	Square Drive	Weight (Kg)
	A	B	C	D			
AITT-2011	100	75	60	36	M5	1/4"	1.0
AITT-2012	100	75	60	36	M5	1/4"	1.0
AITT-2013	100	75	60	36	M5	3/8"	1.0
AITT-2014	115	75	60	40	M5	1/2"	1.2
AITT-2015	150	90	75	55	M5	3/4"	2.6
AITT-2016	150	90	75	55	M5	3/4"	2.7
AITT-2070	150	90	75 <td 55	M5	1"	2.8	
AITT-2017	160	106	95	80	N/A	1 1/2"	3.8

\*The face mounting holes are in a square, centrally located around the square drive.



Models 2011-2016 & 2070



Model 2017

Advanced Witness Systems Ltd © 2025

MANUFACTURER INFORMATION	SUPPLIER INFORMATION
Advanced Witness Systems Ltd Unit 8 Beaumont business Centre Beaumont Close Banbury OX16 1TN Tel: +44 (0)1295 266939 Email: sales@awstorque.co.uk	